

Employment & Regeneration in LB Enfield



September 2015



Introduction



Aims



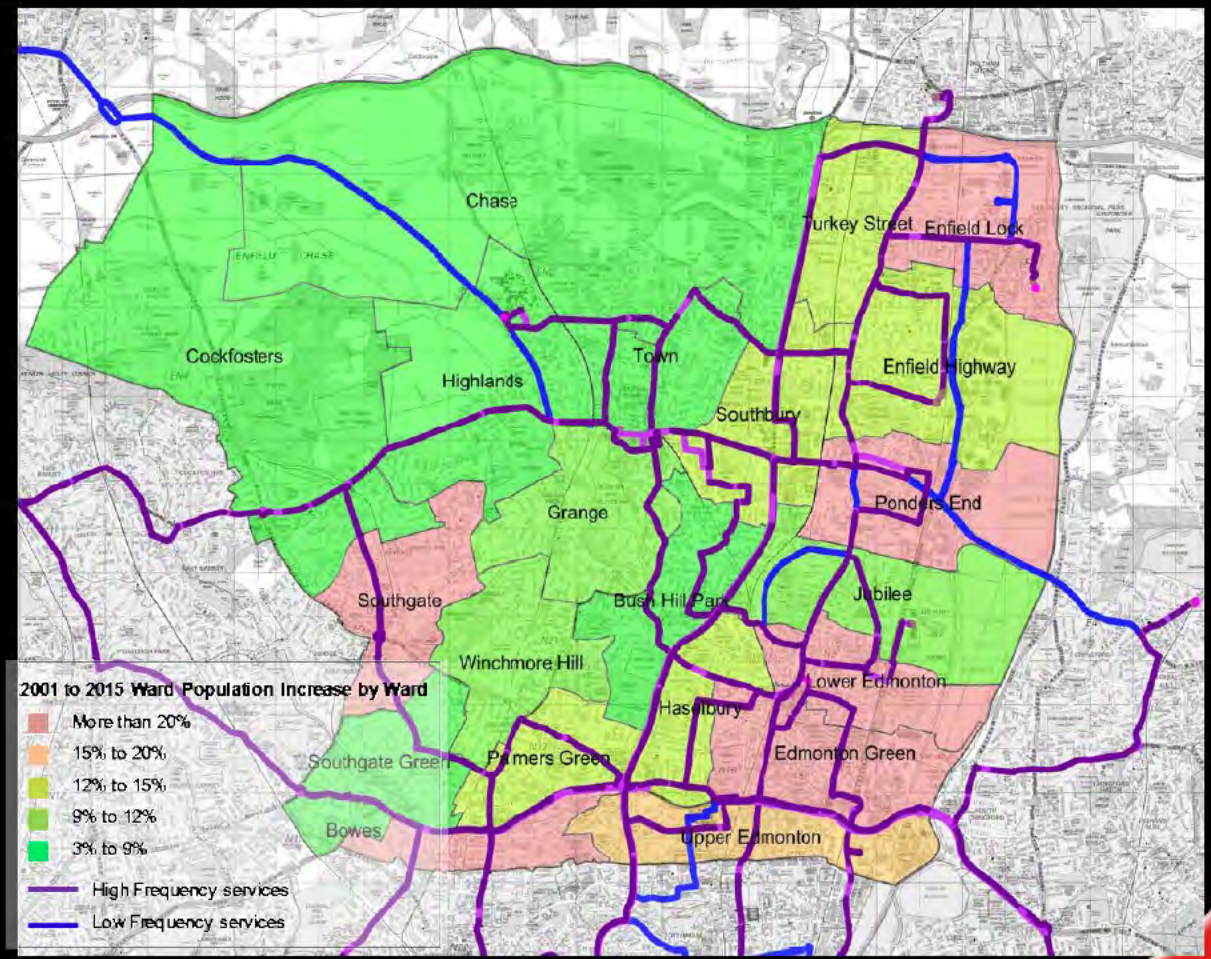
Approach to Study



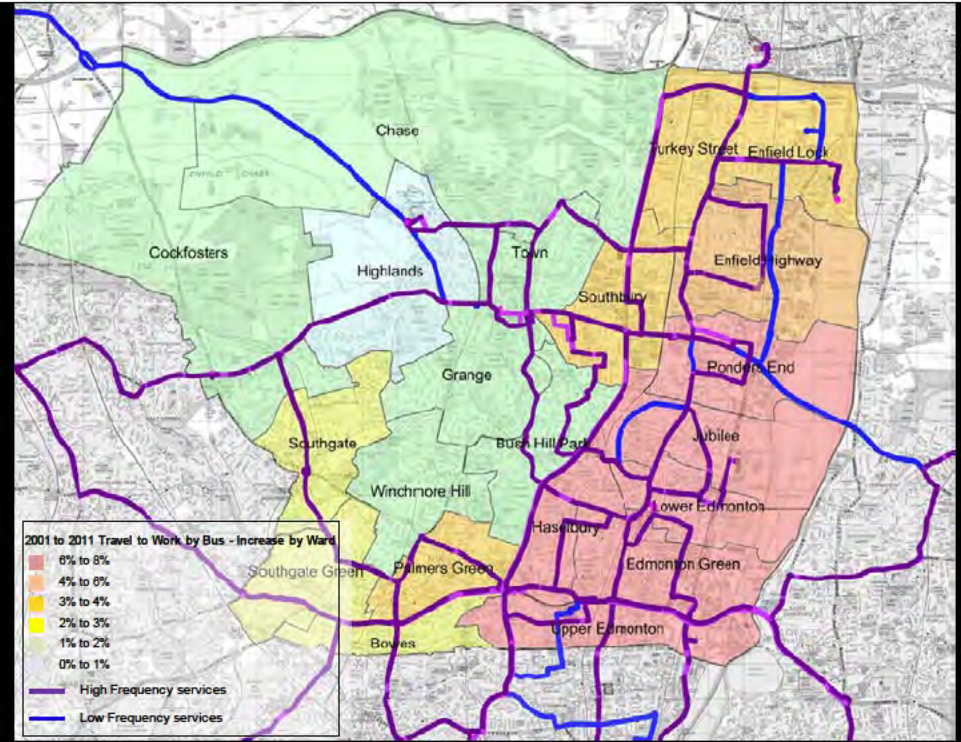
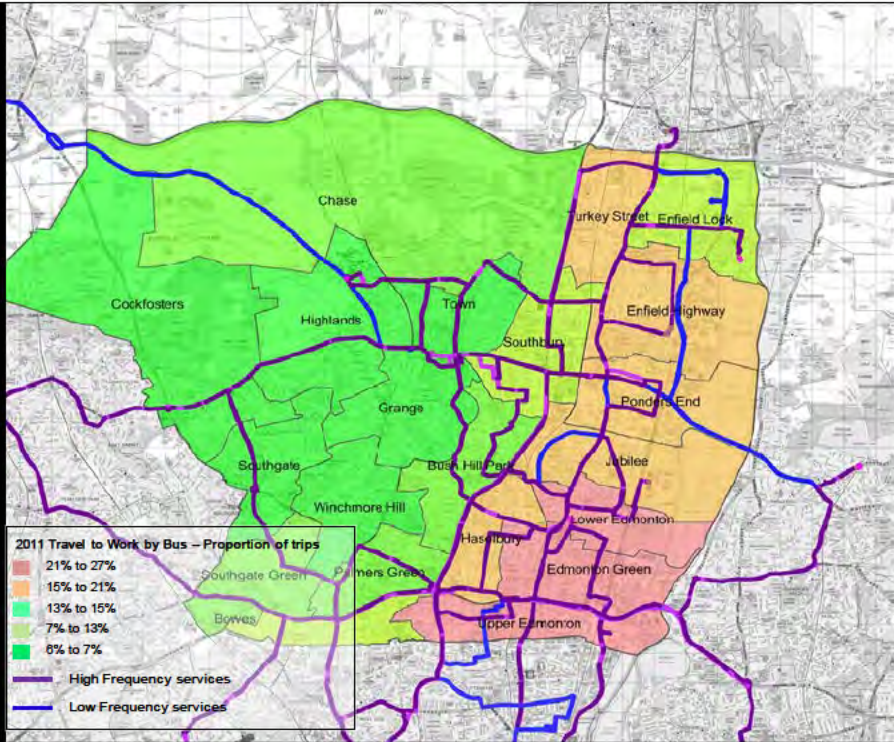
Methodology



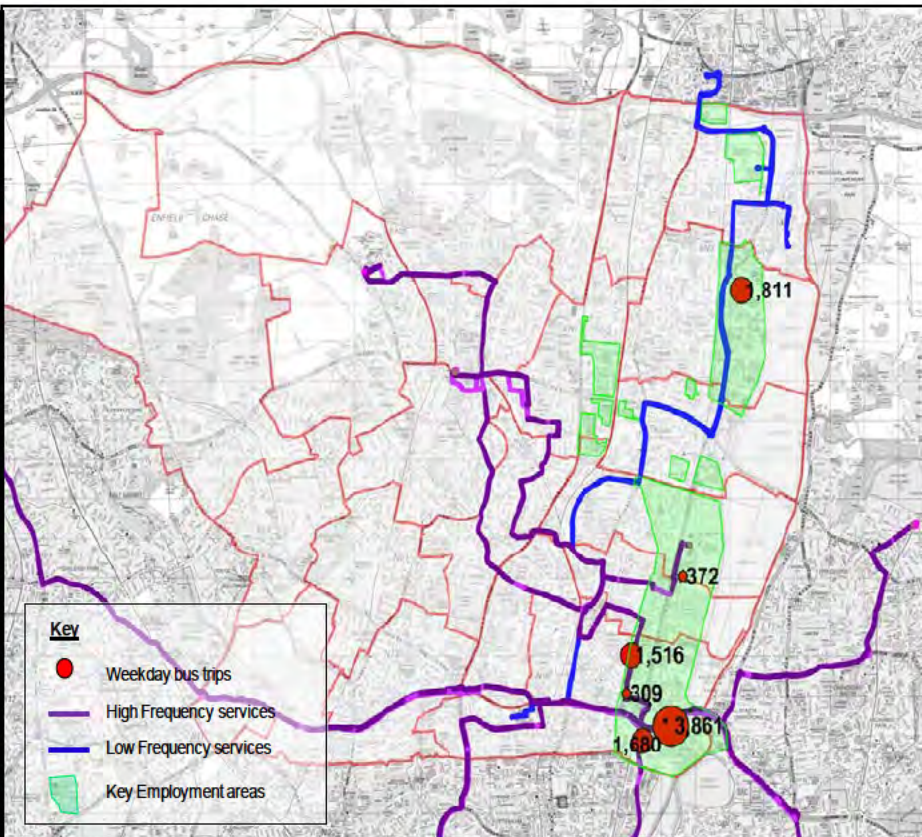
Population Growth



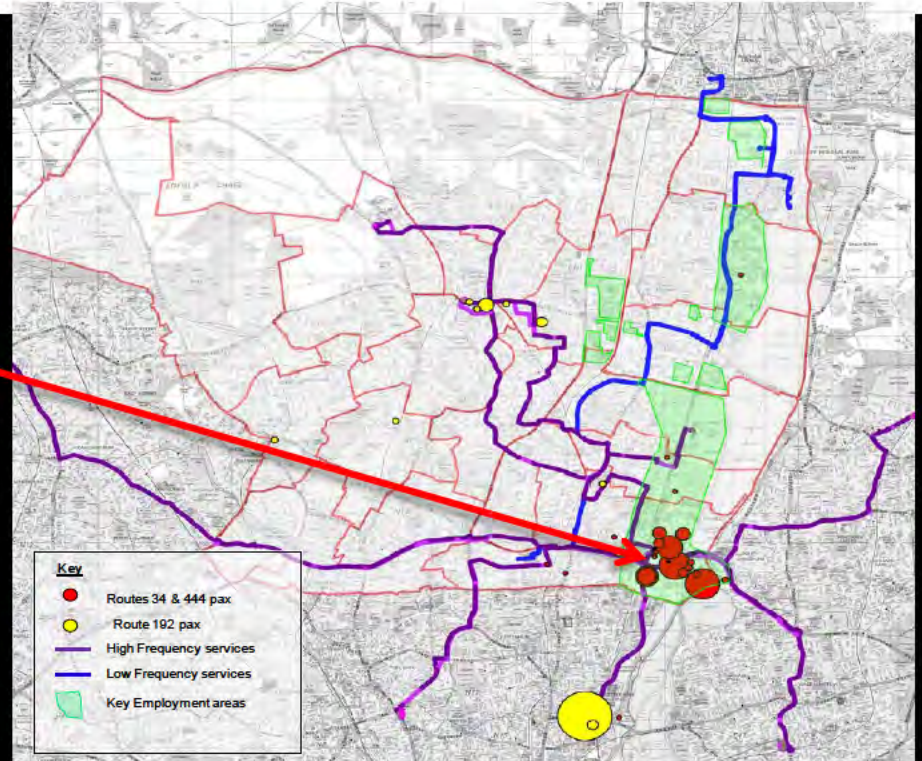
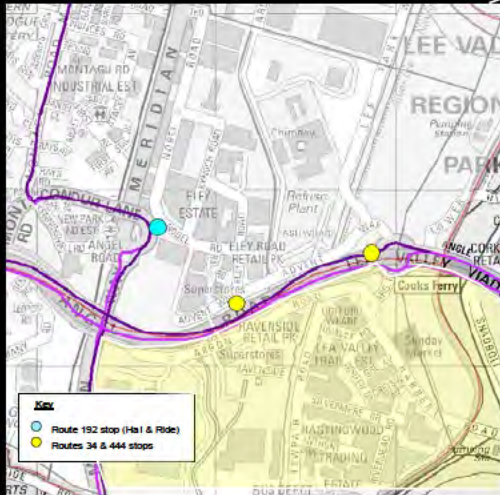
Travel to Work



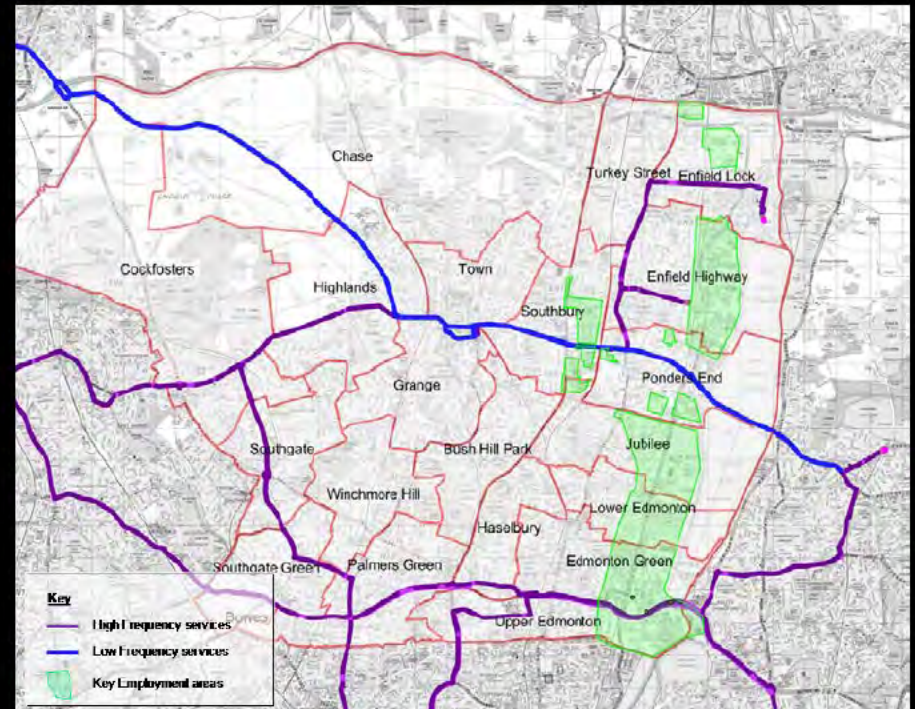
Access to Employment



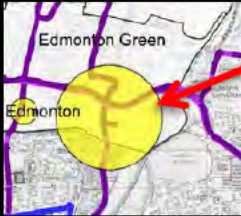
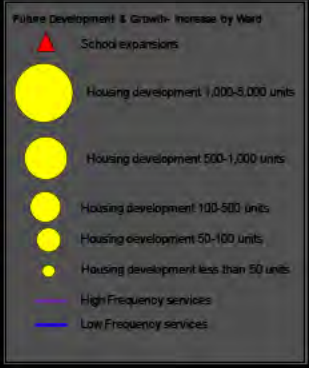
Access to Employment



Network Coverage and Limitations



Committed Development



Key Development Site - Meridian Water

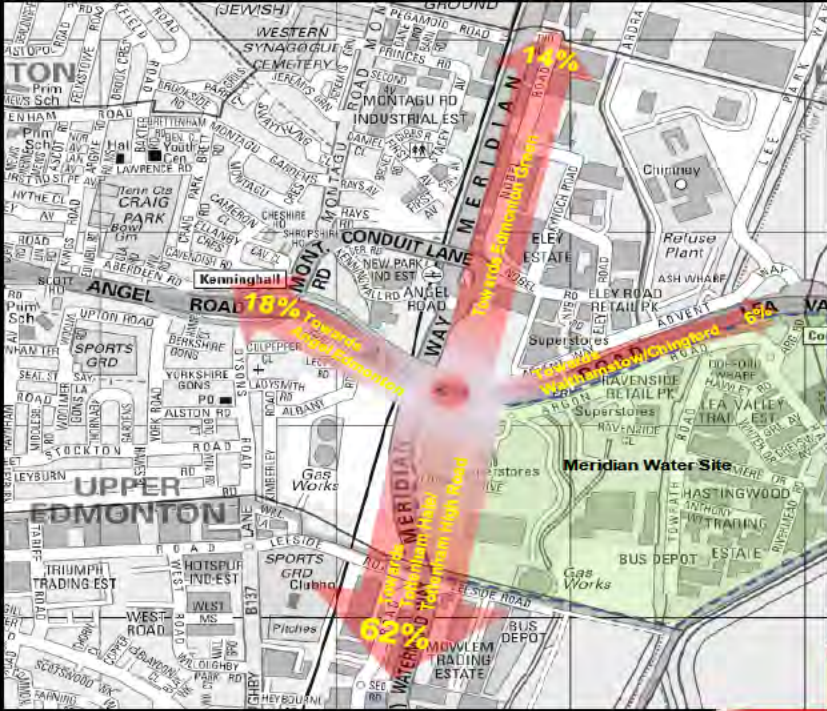


Key Development Site - Meridian Water

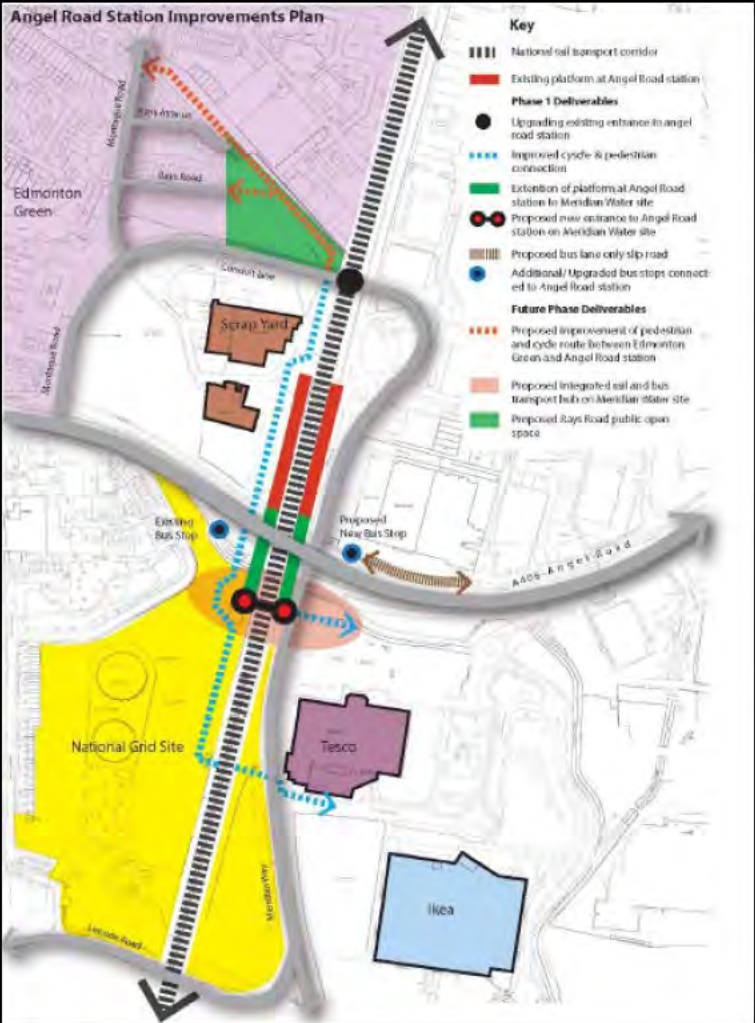


Key Development Site - Meridian Water

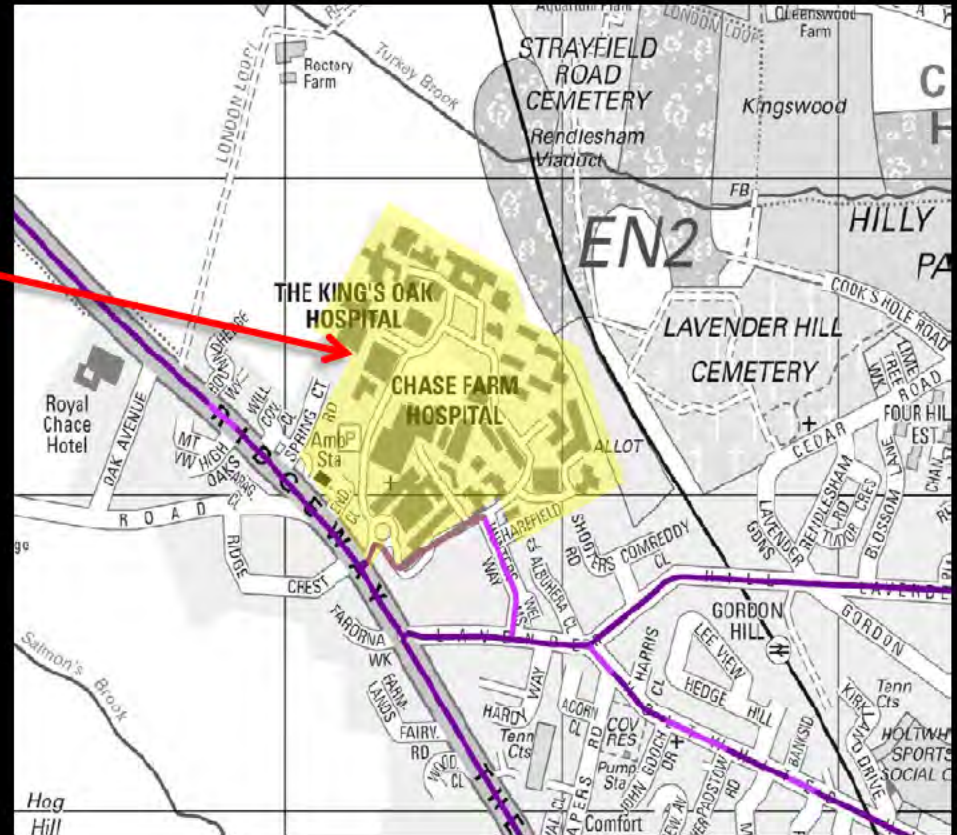
Trip Generation	Bus					
	AM Peak		PM Peak		Daily	
	In	Out	In	Out	In	Out
Residential	108	290	351	245	2269	2651
Employment	198	28	29	197	1951	1796
Secondary Staff	49	12	2	5	83	82
Secondary School Pupils	1014	236	43	96	1739	1723
College Staff	146	5	27	65	627	622
College students	138	5	25	62	604	599
Total	1653	576	477	670	7273	7473



Key Development Site - Meridian Water



Key Development Site - Chase Farm



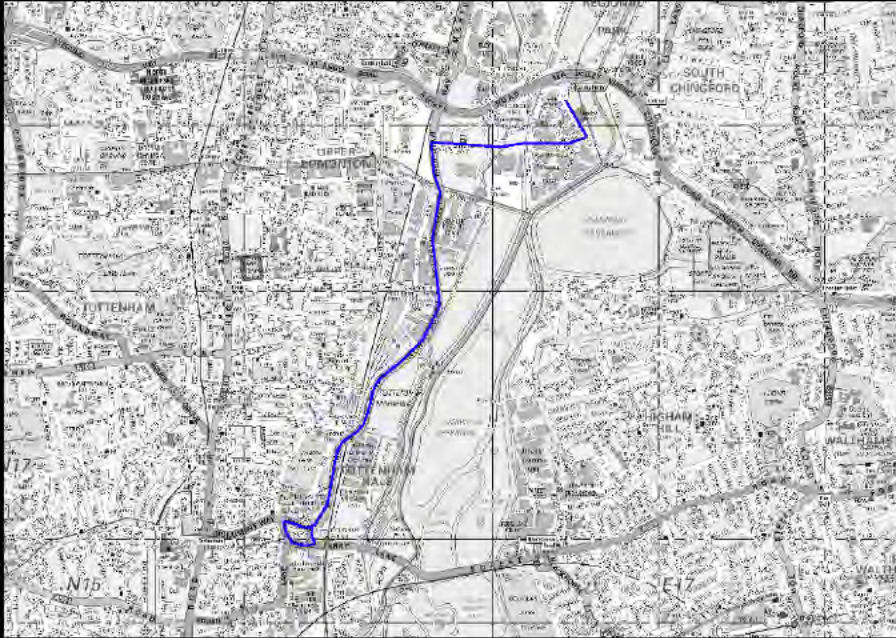
Demand forecasts



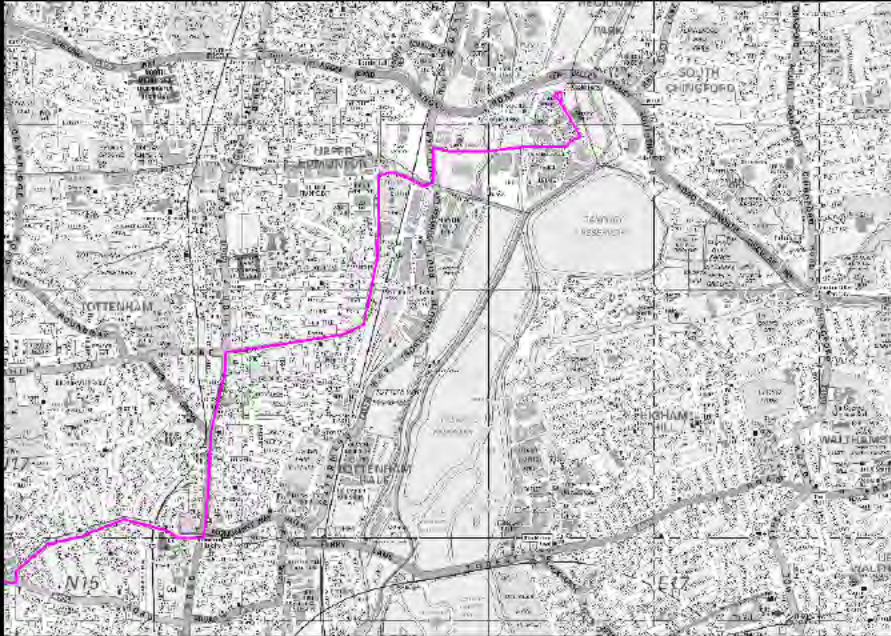
Service Planning - Key Issues



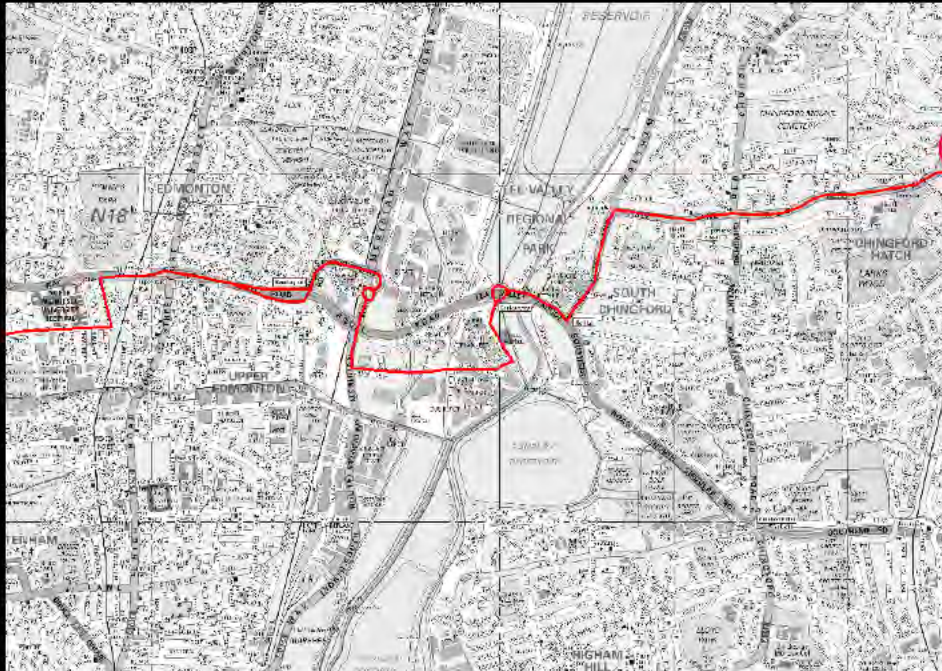
Service Planning Concepts - Meridian Water



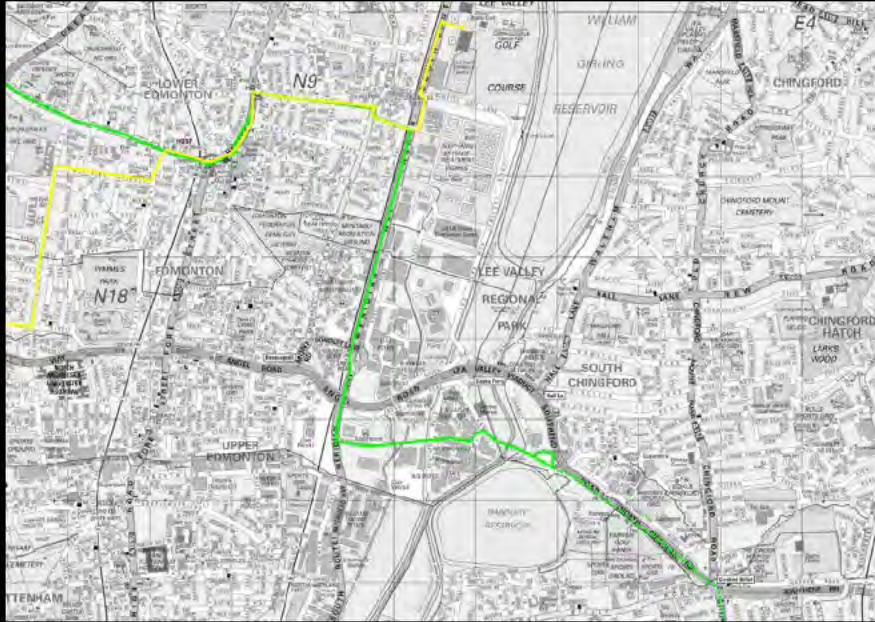
Service Planning Concepts - Meridian Water



Service Planning Concepts - Meridian Water



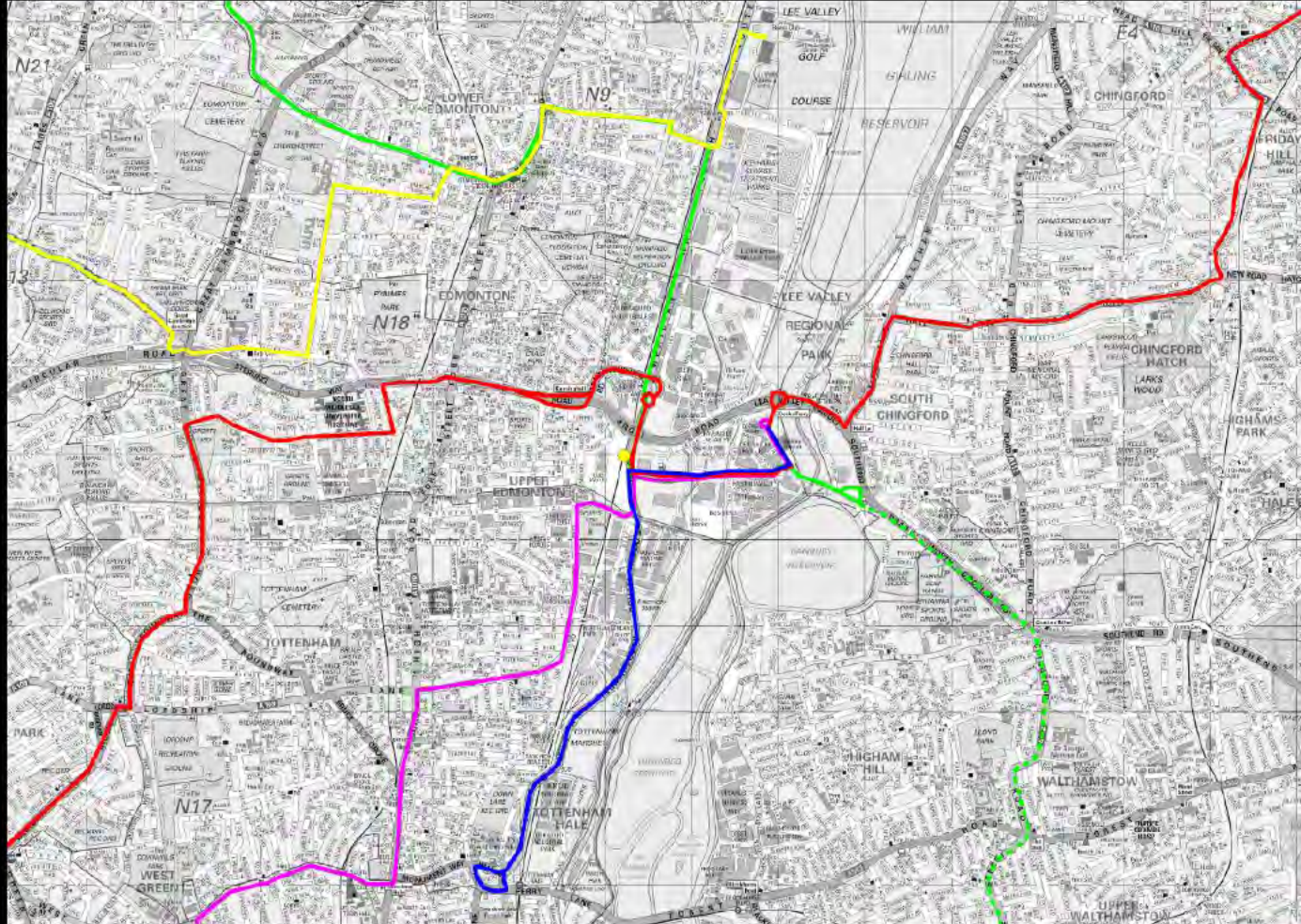
Service Planning Concepts - Meridian Water



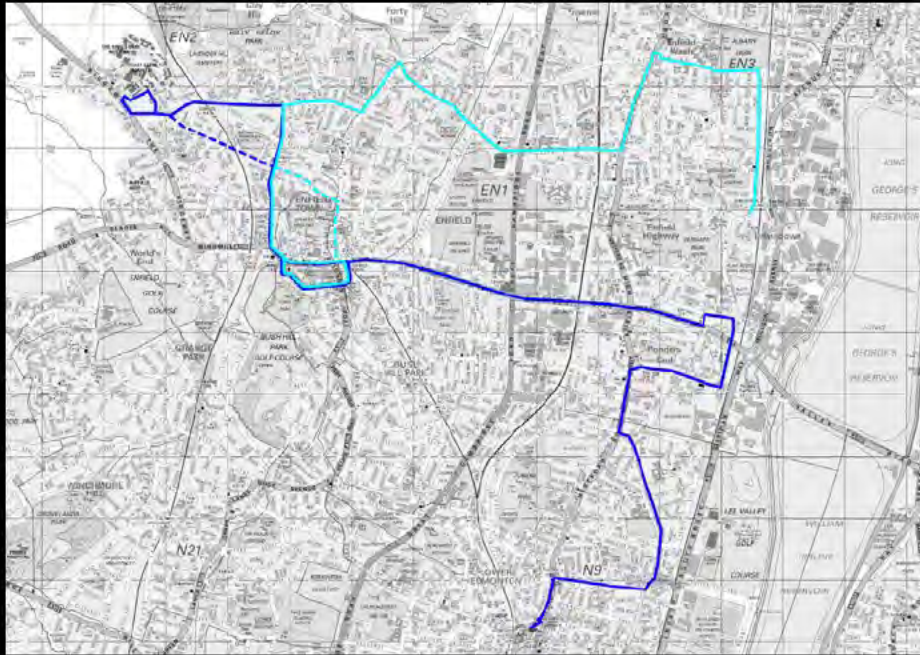
low to
(50,000 pa)



Service Planning Concepts - Meridian Water



Service Planning Concepts – Chase Farm



Service Planning Concepts – SW to NE links



Service Planning Concepts – SW to NE links



Service Planning Concepts – Potential schemes



Bus Infrastructure

Location	Scheme
Edmonton Green	Rerouting of a service via new busway on Montague Gardens/Birmingham Road
Meridian Water	Bus and cycle only bridges across the Lee Navigation as part of Meridian water development
Route W19 extension to Lee Bridge Road station	Would require longer, new 10-day section through nearby industrial estate (controlled by EE Waltham Forest, who are keen to see service extended)
Edmonton Hale	Review of bus priority opportunities as part of area masterplanning
New Road/Peckers End	Investigate options to provide east-west connection of local crossing



Way Forward



www.tfl.gov.uk

